



CAMP CHIEF OURAY

2012

Parent Handbook

Camp Chief Ouray

P.O. Box 648

Granby, CO 80446

970-887-2648

Fax: 970-887-9155

For more information

E-mail chiefouray@ymcarockies.org

On-Line Registration and Forms available at:

www.campchiefouray.org

WHO OPERATES CAMP CHIEF OURAY?



Camp Chief Ouray is operated by Snow Mountain Ranch, a branch of the YMCA of the Rockies. YMCA of the Rockies is a non-profit organization managed by a volunteer Board of Directors.

CAMP CHIEF OURAY HISTORY

Founded in 1908 by the Denver YMCA, Camp Chief Ouray was originally built on a site located near Lake Granby. In 1979, the camp was incorporated into the YMCA of the Rockies and moved to its present site. The first summer session at its present site was in 1980. Camp Chief Ouray is dedicated to helping boys and girls grow in spirit, mind and body and celebrated 100 years in 2008!

ACCREDITATION AND LICENSURE

The camp is accredited by the American Camp Association (ACA) and is visited every three years to assure compliance with the ACA standards. We are also licensed by the State of Colorado Department of Social Services and are visited every three years by their representative for license renewal. We are a non-profit partner with Leave No Trace, Inc. (LNT), an organization dedicated to outdoor ethics.



STAFF



Camp Chief Ouray is staffed with a year-round Camp Director, Assistant Director and a Registrar. They are joined on a seasonal basis by college graduates and students to fill many important roles in the counseling and specialist positions.

Camp Chief Ouray understands the importance of positive role models for today's young people. We carefully recruit, select, and maintain staff for their enthusiasm, maturity, skills and ability to display wholesome values for our campers.

Staff members are chosen through a detailed application and interview process. All staff backgrounds are checked against the Central Registry for Crimes Against Children and the Colorado or Federal Bureau of Investigation in accordance with Colorado licensing requirements.

A well-trained, enthusiastic staff is crucial to an exciting and unforgettable camping experience. Each staff member undergoes an extensive and professional training program together in preparation for our campers' arrival. We emphasize group dynamics, child development, teaching methods, outdoor living skills and safety and health including certification training in First Aid, CPR and Wilderness First Aid.

MISSION STATEMENT

YMCA of the Rockies puts Christian principles into practice through programs, staff and facilities in an environment that builds healthy spirit, mind and body for all.

We will accomplish this mission by serving conferences of a religious, educational or recreational nature, providing unifying experiences for families, offering traditional summer camping experiences for boys and girls, and serving our staff with leadership opportunities and productive work experiences.

SCHOLARSHIPS

In keeping with our Mission Statement, Camp Chief Ouray is open to all children regardless of race, color, religion, national origin, age, sex, handicap or ability to pay.

Camp Chief Ouray's program strives to create an environment that not only allows children a fun week in a beautiful mountain setting, but also helps children develop important life skills such as confidence, tolerance, teamwork and perseverance.....an environment where children can succeed in groups and know the value of getting along with others who are different than they are.....children who are independent and can set goals and know the value of the outdoors.

Camp Chief Ouray has scholarships available with the hope that no child will miss the opportunity to spend a terrific summer building memories, meeting new friends, and learning from new experiences.

These scholarships are made possible through the generous donations of many people. We invite you to assist in any way possible. Your monetary donation, of any size, can really make a difference! Contact the camp office if you are interested in donating to our Camp Fire Circle Scholarship Program.

DONATIONS

Camp Chief Ouray appreciates donations of any of the following items that could enhance our program or facility:

- Used horseback riding boots
- Arts & Crafts supplies
- Newer internal frame backpacks
- Wigs and costumes
- Used western saddles and tack in good condition
- Tools (hammers, saws, pliers, etc.)
- Used sports equipment (i.e., balls, soccer goals, etc.)



LOCATION/HOW TO GET TO CAMP

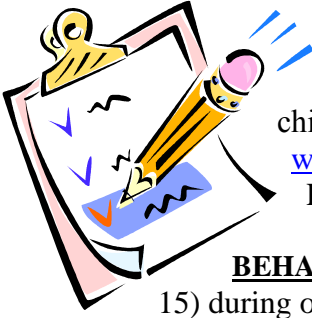
Camp Chief Ouray is located on the 5,100 acre Snow Mountain Ranch (elevation 8,750 feet above sea level) approximately 80 miles or 1.5 hours northwest of Denver, Colorado. Directions to the camp from the Denver area: Take I-70 West to Exit 232 (road signs will read Winter Park, Sol Vista, Granby, Rocky Mountain National Park). Take exit 232 onto Highway 40 over Berthoud Pass.

After you have driven over Berthoud Pass, you will enter the town of Winter Park and continue west on Hwy 40 through Winter Park, Fraser and Tabernash. Four miles west of Tabernash you will turn left off of Hwy 40 onto the YMCA Snow Mountain Ranch. Proceed 2 miles to the rear of the ranch grounds and turn right at the Camp Chief Ouray sign. This road will lead you to the center of camp.

From Boulder, either Hwy 36 from Boulder to I-70 West in Denver and follow the remaining directions; or take Hwy 93 from Boulder to Golden; at the stoplight in Golden at Junction 6 turn right onto Hwy 6 West; stay on Hwy 6 until access to I-70 West; follow remaining directions from above; or (summer only) go to Estes Park and access Trail Ridge Road (Hwy 34) through Rocky Mountain National Park. Stay on Hwy. 34 when you exit the Park until you reach the Hwy. 40 junction sign about 18 miles from Park exit. Turn left or east onto Hwy. 40 through the town of Granby; proceed approx. eight miles and turn right onto the Snow Mountain Ranch; follow the remaining instructions from above once on the ranch grounds. Plan on 2 to 2.5 hours of driving time from the Front Range area.

Please note that using our physical address for GPS locaters or web tools like MapQuest may not give you the most accurate directions.

GETTING READY FOR CAMP – Paperwork!



There are several forms that are **MANDATORY** for every camper attending Camp Chief Ouray. It is **ESSENTIAL** that all of these forms be completed and returned to the camp office by **5/1/2012**. This will allow us to have everything in order for your child's camp experience. All of these forms are available on-line at www.campchiefouray.org. We encourage you to submit the 2012 Release and Medical Examination form by email or fax.

BEHAVIORAL AGREEMENT FORM: This form is for our *Challenger* campers (ages 13-15) during our Traditional Sessions **ONLY**. **Sherpas, Trekkers, and Leadership Training Program Campers** must also complete this form as explained in their separate handbooks. This establishes expectations of conduct during our special teen programs. (*Younger campers need not complete this form.*)

2012 Release and Medical Examination: Health needs of our campers are diverse, ever-changing, and demanding. Having health forms in hand prior to your camper's arrival for thorough review by our health care staff is critical.

- Colorado state law requires each camper to have a physical within 24 months of your child's last day at camp and have the last page of the form completed, signed and dated by a licensed physician, P.A. or nurse practitioner including the examiner's address and telephone number or **by state law the camper cannot remain at camp.**
- **ALL** other sections **MUST** be completed with current information and dated within **6 months** of your child's last day of camp. A parent or guardian **MUST** sign on the line at the bottom of the front page.
- **Please attach a copy of both sides of your insurance card to this form.** If you do not have insurance coverage, checkmark the "NO" in the appropriate box. We have a limited coverage camper health insurance policy for campers without insurance. We will file with our carrier to cover any expenses up to the limits of the policy. This policy is of no cost to you.
- **The immunization record is required.** Dates may be written on the form or a copy of your child's official record may be attached.
- Exemption from a physical examination and or immunizations due to religious or moral grounds requires a waiver. Contact the camp office at 970-887-2648 to request this form.
- **Medications:**
 1. **COLORADO STATE LAW** stipulates that only medications prescribed by your health care provider may be dispensed at camp. Any medications **you** have listed in Part C, Medications, must also be listed on the examiner's Part III (last page of form) "Current Medications" section. (Dosage must also be listed). The medication section in Part III acts the same as a prescription when completed properly by your provider. This does mean that your physician, P.A., or nurse practitioner must complete this section in the same manner that he/she would write a prescription. Make certain that the lower "Physician's Signature Required" section is entirely completed, signed and dated. Please read further information listed below regarding your child's medications:

- **Any medications** your child takes, including but not limited to, any maintenance medications; behavioral disorder medications; antibiotics; herbal/homeopathic medicines; vitamins; eye/ear drops; inhalers; epinephrine ("epi") pens, etc. must also include the dosage. Please send all medications to camp in their **original container** noting the RX number and physician name. Any prescribed medication or non-prescription, ***over-the-counter medication MUST be noted properly in PART III as explained above in order to be dispensed at camp.**
- **Medications added or changed after exam:** For any medication prescribed or changed for your

child after his/her exam, you will need to bring the medication in the original pharmacy container noting the RX number and physician name. If this is not possible, you or your health care provider will need to provide us with a prescription either by FAX or at check-in.

- **Over the counter (OTC)** medications for the common cold, stomach ailments, headaches, cuts and abrasions are stocked in our Health Center and administered by our Health Center staff according to our camp physician's standing orders. Call the camp office if you need more specific information.
- **All medications are required to be turned into the Health Center staff at check-in.** The only exceptions are inhalers and epi pens which are allowed to be carried by the camper.

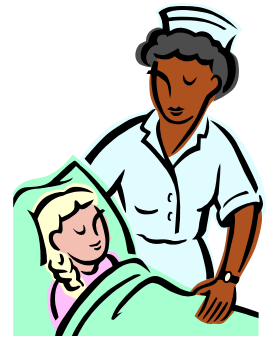
MAD ADVENTURES PARTICIPANT RELEASE AND INDEMNITY AGREEMENT:

Campers participating in the one day rafting trip on Thursday **MUST** complete and sign this agreement. PLEASE RETURN IT TO THE OFFICE. **Returning the original form by mail is preferred**; however we do accept faxes and scanned e-mail attachments of that form.

HEALTH AND SAFETY AT CAMP

Facility and Staff

- Our program is designed with camper health and safety in mind. We have a well-equipped and modern Health Center on camp grounds with a **RESIDENT NURSE** in charge of medications and first-aid needs.
- Our local clinic is 15 minutes away from camp. It is a Level I center offering 24 hour care and consultation.
- Our health care staff are seasonal and reside in the Health Center during the camp season between the last week in May through Labor Day (until the camp season ends). They may be contacted during this time. The year round administrative staff can make notations regarding specific health needs for your child's records during the remainder of the year.



HEALTH CARE ON CHECK-IN DAY

Expedite your check-in by reading your Parent Handbook and sending your forms to our camp office **prior** to your arrival on Sundays between 1:30 p.m. and 4:00 p.m.

- Receipt of the completed 2012 Release and Medical Examination form prior to check-in allows our health center staff to be much better prepared for your camper and decreases the amount of time spent in the Health Center line. It is **EXTREMELY IMPORTANT** that **ALL** sections of your Health form are completed in their entirety.
- Your check-in will include a general check-in for cabin assignment, etc. You will then proceed to a different table for your health screening. There are two Health Center screening tables. One will be for those campers **WITHOUT** medications. The other will be for those campers **WITH** medications. If you are unsure as to which line to proceed to from general check-in, ask any camp staff and they will assist you.
- **ALL** campers will receive a health screening. This consists of, but not necessarily limited to, a lice check, temperature check, and questions regarding your child's current health condition. **Plan on one hour for your camper's check-in.**
- All medications brought to camp are to be turned into the Health Center staff at check-in. The only exceptions allowed by Colorado state law are: an inhaler and an epinephrine pen.

HEALTH CARE DURING YOUR CAMPER'S STAY

- Camp Chief Ouray does everything possible to ensure a healthy, fun and safe camping experience for your child. Our Health Center staff is either available or on call 24 hours a day for general first-aid. Parents are contacted by our health care staff if a camper's illness or injury requires treatment by the camp's clinic physicians or the camper is retained in our Health Center for a period of 24 hours. Our resident camp nurse will be in communication with both the clinic and both parents regarding the diagnosis, any necessary medications, and the necessary after care

treatment.

- Medications are dispensed by our Health Center nursing staff or specially trained staff at the Health Center daily after breakfast, lunch, dinner, and before evening vespers. **Camp Chief Ouray will supply all necessary over-the-counter medications for common ailments and illnesses per standing orders from our camp physician.**
- The Middle Park Medical Center is 15 minutes away from camp. The clinic is fully staffed 24 hours a day. Transportation to and from the clinic is provided by our camp travel staff for non-emergency trips. Ambulance service is provided by Grand County EMS services for emergencies. A staff member will be with your camper at all times during his/her transport and throughout their entire clinic visit.
- Your camper usually is seen through the emergency room portion of Middle Park Medical Center. The clinic portion cannot always schedule appointments for our campers. The only exception is for any type of maintenance injections such as allergy shots. If your camper requires this type of medical treatment, call the camp office.
- While campers are out on trail with Wilderness Adventure and Leadership Training Programs, the following emergency procedures are in place.
 1. Staff members are trained in Wilderness First Aid or Wilderness First Responder.
 2. Staff are trained in evacuation procedures and equipped with maps that identify closest ranger stations.
 3. Staff members often carry a GPS Spot Detector.
 4. If staff members are unable to tend to an emergency, 911 is called.

If you would like to see the wilderness evacuation procedure, please contact Camp Chief Ouray office, 970-887-2648.

- The following are the clinic billing procedures:
 1. Your insurance company will be directly billed by the clinic. As the primary provider, you will receive statements. It is **your responsibility** to get payment to the clinic according to their terms. If seen in the emergency room, you will receive a physician's fee statement and an emergency room fee statement separately. If seen in the clinic portion, all procedures are on one statement. If ambulance transportation was provided, a separate fee statement for the Grand County EMS will be mailed to you. Fees charged will vary depending upon the medical services provided. **Emergency room fees are substantially higher than the clinic fees to which you are accustomed.** In non-emergency cases, you may wish to take your camper home. You are welcome to discuss this option with our camp nurse.
 2. Camp Chief Ouray provides a limited, secondary insurance policy (during the summer season only) for those campers who have no coverage. CAMPERS WHO HAVE PRIMARY COVERAGE may also co-file with our insurance company to assist in covering those costs your primary insurance company won't cover. The limits of coverage are \$5,000 for accident/injury, \$1,000 for illness, and \$1,000 for dental coverage. If you wish to co-file, call the camp office for instructions.
 3. Pharmacy services will be provided by the local City Market pharmacy. If your camper requires prescribed medication, the pharmacy staff will bill your insurance directly whenever possible. If the pharmacy cannot bill your insurance company, the prescription cost for your camper will be charged to the Camp Chief Ouray account. The RX receipts for individual charges will be mailed to you. We request re-imbursalment payment upon receipt (checks payable to Camp Chief Ouray).

HEALTH CARE AND CHECK-OUT DAY



Check-out days (Friday's between 4:00 p.m. and 5:30 p.m.) are buzzing with excitement. **YOU ARE REQUIRED TO SIGN OUT YOUR CHILD AND WILL NEED TO SHOW I.D.**

REMEMBER! If your camper brought medications to camp, you need to pick them up from the Nurse. You can also consult with our Health Center staff regarding any medical care your child received while at camp.

Campers traveling home by air or bus are to have their medications returned to them for their trip home. Any medications left at camp at the end of each session will be mailed home to you the following week. You may want to call the camp office to confirm this.

Most licensed facilities make every effort to provide a safe and healthy environment for children. Unfortunately, on rare occasion, an incident of physical or sexual abuse may occur. If you believe that your child has been abused, you should seek immediate assistance from the county Department of Social Services. The telephone number to report child abuse in Grand County is 970-725-3331.

Child care services play an important role in supporting families, and strong families are the basis of a thriving community. Your child's education, physical, emotional, and social development will be nurtured in a well planned and well run program. We invite you to observe our program, especially with regard to children's health and safety, equipment and play materials, and staff.

For additional information regarding licensing or if you have concerns about a child care facility, please consult the Colorado Division of Child Care at 1575 Sherman Street, Denver, Colorado 80203-1714 or by phone at 303-866-5858.

CAMP CHIEF OURAY PACKING LIST

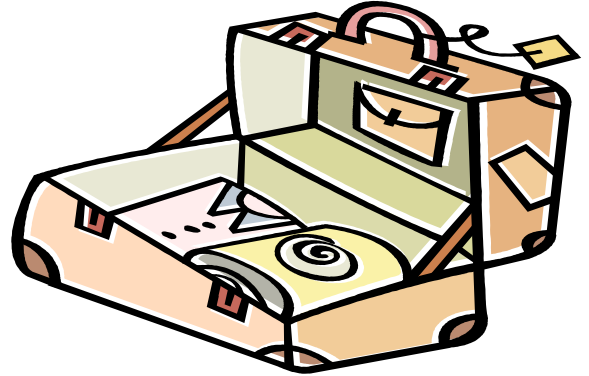
One suitcase, duffel bag, or footlocker and a sleeping bag are sufficient for packing for a week or two of camp. Space is limited in the cabins, **PLEASE do not over pack. CLEARLY MARK EVERYTHING WITH YOUR CAMPER'S NAME not INITIALS!**

THE FOLLOWING ITEMS ARE ABSOLUTELY ESSENTIAL:

Sleeping bag Lightweight BUT warm is necessary; a rating of 15-20degrees; filled with synthetic fibers or down is sufficient.

Day pack: (book/school pack size). With the following ESSENTIAL items in this pack:

- 2 Water bottles (round with screw top lids that don't leak-Nalgene brand is best)
 - o **CCO water bottles available for purchase at Check-in**
- Rain Gear (poncho or coat/pants combination)
- 1 pair of sweat pants or wind pants
- Medium weight jacket (warm-long sleeved fleece works best)
- Winter Stocking Cap
- Sunscreen
- Insect repellent (non-aerosol)
- Chap Stick
- Baseball Cap or bandana for sun
- Sunglasses with UV protection
- Flashlight with extra batteries



RECOMMENDED ITEMS TO SEND TO CAMP:

- 5 T-shirts (no sleeveless, tank or tube tops)
- 1 additional pair of sweatpants
- 1-2 sweatshirts or sweaters
- 5 Socks-cotton; 1 pair wool socks
- Underwear (recommend 5 pieces)
- 2 bath towels / 1 wash cloth
- 1 pair Teva style sandals for rafting only
- Hiking boots or sturdy tennis shoes
- 1 pair flip-flops for the shower (**cannot wear during regular camp activities**)
- 2-3 pairs of jeans or long pants (enough for length of stay)
- 2-3 pairs of shorts (of modest length) (enough for length of stay)
- 1 set of pajamas or appropriate sleeping attire
- 1 set long underwear (**polypropylene-not cotton**)
- Swimming suit (1)
- Laundry bag (for dirty clothes)
- Sleeping pad-thin roll-up pad for camp-out nights

Toiletry Kit:

- Toothbrush/paste
- Deodorant
- Soap/Shampoo/Conditioner
- comb or brush

OPTIONAL:

- Bedding: Pillow/Linens (most campers sleep in their sleeping bags)
- Extra blanket for warmth
- Camera (camper's full name should be clearly printed on it)
- Stationary, pre-stamped envelopes and pens
- Crazy Creek Gloves

HORSE BACK RIDING INSTRUCTION CAMPERS

MUST have long jeans or pants as listed above.
MUST have suitable boots for riding:
Sturdy, flat smooth sole with 1/2" heel.

OPTIONAL BEGINNER TRAIL RIDE CAMPERS (Cost \$12)

MUST have long jeans or pants as listed above.
HIKING BOOTS **ARE** allowed
*Tennis Shoes are **NOT** allowed*

We suggest that you send old clothes and linens with your camper. Some items may be lost or damaged. Please remember that we are in the heart of the Rocky Mountains and our weather can be unpredictable! Our temperatures usually reach 75 to 80 degrees in the daytime all summer and drop to 25°- 40° at night in June and early July with warmer nights, 35°- 48°, from mid-July through August. Our summers offer beautiful, sunny days with occasional afternoon showers and cool, crisp evenings and nights. This list has been created with your camper's comfort and preparedness in mind. Those items listed as **essential** must be brought to camp. If you do not have these items, we suggest you look for them at discount store.

DO NOT BRING THESE ITEMS TO CAMP:

***Alcohol *Tobacco *Drugs *Knives *Skate Boards *Expensive Items *Tank/Tube Sleeveless Tops *Short Shorts*Food/Candy/Gum *Soda *Snacks *Spending Money**

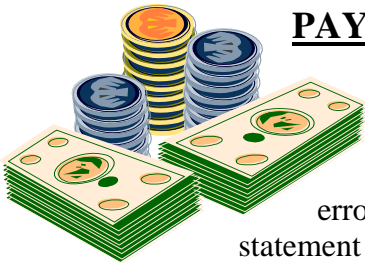


We strive to offer children a unique outdoor experience. Please help support us in this mission by not allowing campers to bring the following electronic items, as they detract from the experience:

Cell Phones, CD's/Tapes/ipods, MP3Player, Radios, Electronic Games

Camp Chief Ouray is not responsible for lost or damaged items.

OUR CAMP FEES INCLUDE ALL MEALS AND A DAILY SNACK, A CAMP T-SHIRT AND SESSION PICTURE CD. We do not have a camp store.



PAYMENT POLICY

Your fee statement will indicate your base camp fee, session number and dates, requested transportation, any special programming such as the Beginner trail ride, rafting and challenge course, any appropriate discounts, and deposits. If there are any errors, please contact the office. You will only receive the initial statement. That statement is also available on-line if you registered there. No further statements reflecting interim or final payments will be sent, unless necessary for credit card payments.

All payments are required to be in the camp office at least **30 days** prior to the arrival of your child at camp. Camp Chief Ouray reserves the right to cancel any registration if the monies are not received in the office by the thirty day deadline. **YOUR CANCELLED CHECKS OR CREDIT CARD STATEMENTS ARE YOUR RECEIPTS for your deposit(s), interim payments, and final payments.** Retain the fee statement for your records and for any tax reimbursement you may need at the end of the year.

We strongly suggest that you make a copy of all forms and checks sent to the Camp Chief Ouray office.

All registrations and payments are received through on-line registration, email, or the U.S. Postal Service, UPS, DHL or Fed Ex. Occasionally, items will be lost in transit. Should any mail be lost, we will repeat the registration process and any copies of forms that you have will expedite that process.

REFUND POLICY

YOUR DEPOSIT OF \$100.00 IS NON-REFUNDABLE, regardless of when a cancellation is received. If you cancel your child's camp reservation 30 days prior to your child's arrival date at camp, a 75% refund of any amount paid on your balance will be issued. Any transportation fee paid with your deposit can be applied to your final balance should you cancel this service at least thirty days prior to your child's initial attendance. There will be no refund of transportation fees if notice is given to the camp office less than thirty days prior to your child's arrival at camp.

- **There will be no refunds when a child goes home early in cases of disciplinary action or homesickness.**
- **There will be no refunds should you cancel a special program activity (Rafting, Riding, Challenge Course) less than thirty days prior to the child's arrival at camp.**
- **Refunds will be issued for medical reasons only with written verification from a physician.**



ARRIVING AT CAMP ON SUNDAY CHECK-IN (FIRST DAY OF CAMP)

CHECK-IN AT CAMP IS BETWEEN 1:30 P.M. AND 4:00 P.M.

ALL Traditional camp sessions begin on **SUNDAY**. PLEASE DO NOT ARRIVE ANY EARLIER THAN 1:30 P.M. We need the time prior to 1:30 p.m. to properly prepare for your child's arrival. We ask that you try to arrive no later than 4:00 p.m., and we would appreciate you letting us know if you expect to be late. The first meal served to all campers will be dinner (5:45 p.m.).

ALL campers are required to check-in.

Upon arrival in the camp parking lot, Proceed to the check-in tables located inside the upper level of the Main Camp Building. Once you have completed the check in process you can hand over luggage to our crew who will tag and deliver your camper's items to their cabin.

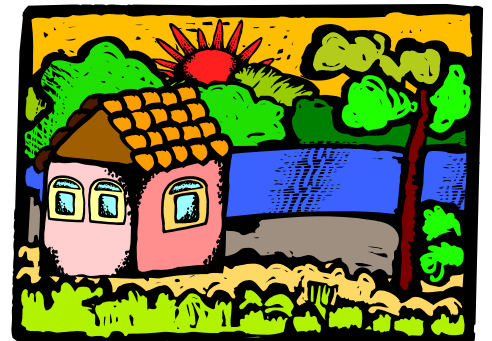
Our check-in includes receiving the camper's cabin assignment and a health screening including a temperature and lice check by our camp nurse and trained staff (as required by Colorado state law). Any campers arriving with medications need to be prepared to hand them over to the Health Center staff at check-in.

We make every effort to make this check-in as efficient as possible, but you should plan to spend approximately one hour for the check-in process. We encourage you to visit your child's cabin and meet his/her counselors after you check-in.

We do ask that you plan to say good-bye to your child by 4:00 p.m., as most children will be at camp by that time, and the cabin groups will begin their camp tours and "getting acquainted" activities.

CABIN ASSIGNMENTS AND CAMP LIFE

All children will be living in cabin groups with children of their same age or grade. The youngest campers will live in three dormitory-style buildings. There are bathrooms on each floor of these buildings. The older children will live in eighteen rustic cabins (nine for boys/nine for girls). There are two centrally located toilet/shower facilities, one designated for boys; one designated for girls. Responsibility for the cleanliness and basic up-keep of the cabins and bathroom facilities is divided between the cabins. The cabin unit is our basic and most important group at camp. They work, play, and sleep together. Here your camper will learn about the give and take of group living, understanding others and making new friends. Our staff to camper ratio is 1 to 5 or lower.



It is our belief that each camper will have a significantly better camp experience by **not** requesting a cabin mate. Our counselors are trained to build cabin unity and make each camper feel welcome from the moment the session begins. This encourages our campers to expand their comfort zone and make new friends while at camp. However, we do recognize that going to camp with a friend may make the adjustment process easier for some campers. We do allow each camper to make **one** cabin mate request. Your campers request must be within one year or less apart and/or one grade level or less apart. Also, the cabin mate request must be mutual between campers for it to take priority. We do not guarantee placement, but will make every effort to honor the request.

All meals are served family-style in Chipeta Dining Hall. A well-balanced, varied menu is served. A vegetarian menu is available. Campers sign up for the vegetarian menu on Sunday. Call the camp office regarding special restricted dietary needs. Campers will share in the responsibility for setting the table for their cabin and for post-meal clean-up. Each cabin is supervised by its counselors at meals.



BUS TRANSPORTATION is offered on the opening and closing day of each session from **Exit 259 (Golden/Morrison) on I-70 the Hogback Jurassic Park-n-Ride Woolly Mammoth Lot**. On opening day of each session, **SUNDAY**, the bus leaves Exit 259 at 12:00 p.m. (noon). Check-in for the bus begins at 11:30 a.m. On the closing day, **FRIDAY**, the bus arrives at Exit 259 between 7:15 p.m. and 7:30 p.m. A staff member always accompanies the campers on the bus. The camp office will contact you if any changes to bus transportation times and location occur. Also, please call the office within 30 days of your camper's arrival with changes, additions, or cancellations of bus services (\$30 fee each way).

AIRPORT TRANSPORTATION

Detailed flight information for your camper must be into the office 30 days prior to your camper's arrival. It is a **requirement** that all parents of campers arriving and or departing through Denver International Airport (DIA) **call the camp office one week prior** to your camper's flights to confirm flight information, any changes and final instructions.



GENERAL INFORMATION FOR AIR TRAVEL TO AND FROM CAMP

1. Campers **MUST** have a photo I.D and a ticket (**MUST** carry copy of e-ticket if not a paper ticket).
2. Campers are to use their "Day Pack" as described on the "What to Bring" list as their carry on. Any money, identification, tickets, medications, or paperwork must be in this carry on. Limit checked luggage to only one piece and your sleeping bag/gear as a second piece.
3. Our mini-bus service (\$65 fee each way) to DIA is limited. Time spent in DIA will vary widely depending upon flight changes and delays. DIA is a 2 ½ hr. drive to/from camp. Expect a long day for departures!
4. You **MUST** pay the unaccompanied minor fee for both arrivals/departures in advance if your camper is 12 or under for us to accompany your camper to and from their arrival/departure gates. If your airline allows an exception to the age limit for this service, notify our office.
5. Your child is to hand over their tickets, I.D., any paperwork, money and medications to our staff upon arrival to be stored in the office.

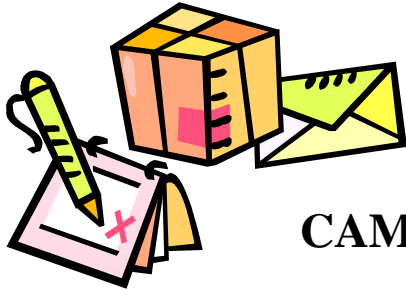
AIRPORT ARRIVALS:

Campers arriving at DIA for camp should arrive between 10AM and 2PM MST on the day your session begins. Our staff can **ONLY** accompany your camper to and from their arrival/departure gates if they are 12 and under and you have paid the round trip escort service fee. CCO Staff are **ONLY** allowed to meet campers who have not paid for escort service at the top of the escalator on LEVEL 5 (Baggage Claim Level) by the fountain. **Directions are as follows:** Upon leaving the plane at the gate in DIA, follow the electronic signs overhead to "Baggage Claim/Terminal" along Concourse A, B or C to the escalator going down to the Train Level. The train will take you to the baggage claim and main terminal. De-board the train at the prompt, "Baggage Claim / Terminal". Proceed up the escalator to Level 5 to the large fountain. Remain here (do not proceed alone to luggage carousels) and our staff member with staff shirt, nametag, and I.D. will be at the designated pick up location, greet your camper and proceed to baggage claim.

AIRPORT DEPARTURES:

All Campers leaving camp by plane will leave camp on SATURDAY mornings.

Campers departing camp by air at DIA should plan departure flights between 12PM and 3PM MST on the Saturday after your session ends (Sessions officially close on Fridays). Our staff will escort your child to the airline check-in counter and if your camper is 12 and under, accompany your child to their gate until he/she boards their flight. For campers over 12, our staff will escort your child to the check-in counter and remain with them until he/she proceeds to the main security area. Campers who will not be accompanied proceed through the main security area and down the escalator to the TRAIN and board at the prompt. They will de-board the train on the appropriate concourse by following the train's voice prompt and continue to their departure gate. Departure gates are clearly marked. There are arrival/departure screens on each concourse that your unaccompanied camper should check and make certain that their gate assignment and departure time received at their airline check-in counter is still correct. There are restaurants, restrooms, and telephones on each concourse for your camper's convenience.



COMMUNICATION WITH YOUR CAMPER WHILE AT CAMP

You are encouraged to correspond with your child.

Letters and/or packages should be addressed to your child AS INDICATED BELOW:

LETTERS & PACKAGES & POSTAL EXPRESS SENT THROUGH THE U.S. Postal Service:

Camper Name & Cabin or Program
Camp Chief Ouray
PO Box 648
Granbv. CO 80446-0648

OVERNIGHT SERVICE BY UPS, FED EX, DHL OR AIRBORNE EXPRESS:

Camper Name & Cabin or Program
Camp Chief Ouray
1101 County Road 53
Granbv. CO 80446

We prefer that you not send packages with food, candy, gum, snacks, etc. A great alternative is to send your camper a non-food package, i.e., magazines, games, etc. Campers are allowed to take **ONLY** non-food item packages to their cabin or group areas. If your camper is in a Leadership Program, or a Sherpa or Trekker, state this on the letter or package.



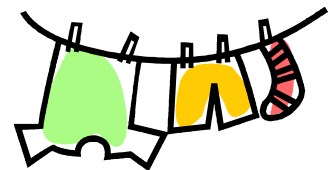
The Camp Chief Ouray Office number is 970-887-2648. In an emergency situation after hours, press “0” from our automated switchboard system for the 24 hour operator.

Please do not tell your children to call you if they are homesick!

***Also, Please help us with our request that your child not bring their cell phone to camp. We understand that for many if not all parents it is an expectation to have instant access to communicate with their child. We ask that you help us help your child develop the independence that comes with a session of camp. You may call the office any time if you are in need of speaking with your child and we will do everything in our power to make that happen. For campers traveling before and after camp, please allow us to store their cell phones in the camp office during their stay.**

LAUNDRY

Those campers who are attending more than one session will have laundry done for them. (We supply all laundry detergent.) This includes campers staying for multiple, consecutive sessions and campers in our Leadership Training Programs. Each camper's clothing is placed in an individual mesh bag and washed in cold water. **Sometimes these bags break open; make certain ALL of your camper's clothing is well marked so that we may return all items to your child should this occur.**



STAYOVERS

For those children registered for more than one session (and those enrolled in the Leadership Training Programs) are welcome to stay at camp between sessions. **There is a fee of \$80 per child per stay over session with exception of LTP campers.** We assume that campers staying more than one session **will** be with us for the time between sessions, unless otherwise instructed by the parent/guardian. We have an appropriate number of staff who will supervise our stayover campers. These campers and staff will enjoy a relaxed time doing activities at a slightly slower pace than the regular camp session. Hikes, games, swimming, volleyball and **new** this year campers will participate in a Cardboard Derby! A non-denominational Sunday service is held. **NOTE: THERE IS NO STAYOVER BETWEEN SESSION #3 & SESSION #4 AS WELL AS BETWEEN SESSION #6 & SESSION #7.**

DISCIPLINE

We have high, but reasonable, expectations about our campers' behavior. If a child's behavior becomes as disruptive as to disturb the experience of the other campers at camp, a decision may be made to remove them from our program.



While the goal for our staff is to create a rapport with campers which encourages campers to talk over and seek ways of handling the pressures they face growing up in today's society, we do not have sufficient staff resources to deal with dependency on alcohol, tobacco or other drugs. Campers should expect to give up established habits in these areas while they are at camp out of respect to the camp goals and their fellow campers. Those who will not give up these habits will be sent home **at parent's expense and with no refund.**

LOST AND FOUND

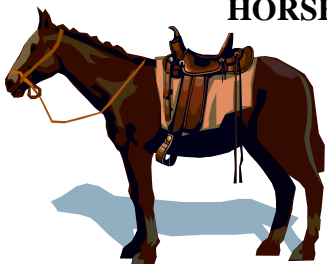
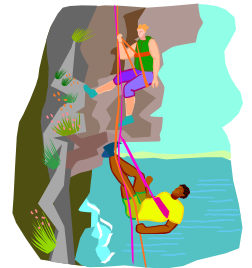
Camp Chief Ouray is not responsible for lost items. We will do all that we can to ensure that your child returns with all of the items brought to camp. **Please be sure to mark ALL of your camper's belongings with their FULL NAME (not just initials).** Be sure to send only older, non-valuable clothing with your camper. If your child is missing items upon your return home, you will need to call the camp office within ONE WEEK of their departure and we will be happy to search for the item(s) and mail them to you. Due to limited storage, camp will only keep Lost and Found items from each session for one week only at which time they will be donated to charity.

ADDITIONAL ACTIVITIES



RAFTING: Those children going on the **one** day rafting trip will be on the Gore Canyon stretch of the Colorado River near Kremmling, Colorado. This trip is offered through an experienced, licensed guide-outfitter. Their staff members are certified in First Aid and CPR and skilled in whitewater rescue techniques. Their rafts are manned with a licensed guide and camp staff member along with campers. U.S. Coast Guard approved life vests and a paddle are provided for campers and staff, along with a safety orientation. All campers (ages 9-15) will take their trip on Thursday's. **A waiver is required.** There is an Additional cost of \$65.

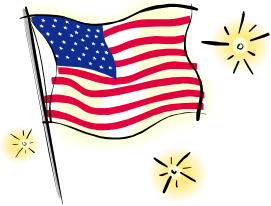
CHALLENGE COURSE: Our Challenge Course (high elements ropes course) is designed for campers ages 12 and up. They will discover their personal resources and increase self-esteem by participating in this exciting program. Campers work to develop trust in themselves and others as they climb to new heights on our high ropes course. This Additional Activity takes one half of a day and the additional cost is \$26. The Challenge Course activity may be cancelled due to inclement weather (usually in the case of heavy rain or lightning and will not be rescheduled).



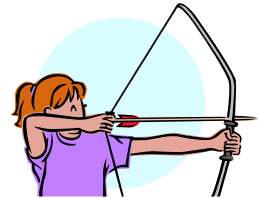
HORSE BACK RIDING INSTRUCTION: Each Horse Back Riding Instruction Session #1-9 offers four different levels of instruction. Campers will spend ½ their day at the Stable and rotate through traditional camp programs with their cabin mates the rest of the day. If your camper is enrolled in a Horse Back Riding Instruction and also one of the other activities (Rafting or Challenge Course), he/she will miss their riding activity and regularly scheduled camp programs during the day or time of that Additional Activity. Those campers invited to participate in the Horse Back Riding Instruction--High Rider level will be in their riding class for all activity periods and will not rotate into other daytime activities.

TRADITIONAL CAMP PROGRAM

A day in the life of a camper at Camp Chief Ouray:



7:00 am Wake Up/ Dress/ Wash Up/ Clean Cabins
7:45 am Flag Raising
8:00 am Breakfast
8:45 am Camp Clean Up
9:15 am Freedom of Choice Activities one and two
11:30 am Pav Call
11:45 am to Noon—Free Time
12:00 pm Lunch
1:00 pm Rest Period (BOB time)
2:00 pm Freedom of Choice Activities three and four
4:30 pm Snack time
4:45 pm Cabin Activity Time
5:30 pm Flag Lowering
5:45 pm Dinner
7:30 pm Evening Program
8:30 pm Vespers Campfire
9:00 pm Cabin Devotion
10:00 pm Lights Out

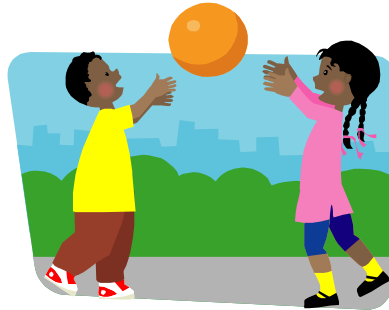


- On Monday and Thursday, the morning and the afternoon activities are set and cabins will be grouped together to participate. On Tuesday and Wednesday, campers will participate in 4 activities in which they choose to participate.
- Campers (12+) signed up for the Challenge Course will participate once during an activity block while they are at camp.
- Horse Back Instruction riders will participate in one activity block each day enjoying the above activities; during the other activity block each day, they will be at the livery participating in their Horse Back Riding Instruction. Riders who have signed up for rafting will miss their Horse Back Riding Instruction on that activity day. They will not miss their Horse Back Riding Instruction if they are signed up for the Challenge Course. (High Riders participate in their riding level for both activity periods and cannot sign up for additional activities.)
- During Cabin Activity Time cabins may decide to play tetherball, basketball, climb the climbing wall, tie dye, practice a skit or mountain bike.
- Vespers and Cabin Devotions concentrate on core values such as caring, honesty, respect, responsibility and faith. These activities are intended to challenge campers in spirit, mind, and body.
- Friday morning is when the optional beginner trail ride takes place for those who have signed up for it in advance for \$12. (Note: the trail ride cannot be rescheduled if cancelled due to inclement weather.)
- Each Traditional Camp Session is centered on a different theme. For example, Superhero Week; Dr. Seuss Week; Pirates of the Caribbean; Wild West Week, etc. Activities focus on the themes and the staff often dress-up to play related characters. We encourage campers to bring theme related items to camp and enjoy the fun, too! *2012 Themes can be found on the website in March of 2012!*

WEEKLY SCHEDULE

The Daily Schedule is followed Monday through Friday along with any additional Special Activities (Challenge Course, Rafting, Riding) offered.

Sunday	Monday	Tuesday	Wednesday	Thursday	Friday
<p>Noon-Staff Meeting</p> <p>1:30-4:00-Check-in</p> <p>4:00pm-Camp Tour Meet Cabin Mates</p> <p>5:00pm-Camp Rules; Camper's Choice Sign Up</p> <p>7:30pm-ROWDIE Campfire</p> <p>8:30pm-Opening Vespers</p>	<p>1:00pm Camp Photo</p> <p>4:15pm Sign up for Freedom of Choice Activities.</p> <p>7:00pm All Camp Game/Activity</p> <p>8:30pm Vespers</p>	<p>Camp Out Night</p> <p>Campers Depart for their camp out site at 4:45pm</p>	<p>7:00pm All Camp Game/Activity</p> <p>8:30pm Vespers</p>	<p>Rafting Day</p> <p>Campers signed up for rafting eat an early breakfast at 7:00am</p> <p>Rafters depart at 7:45am for the Colorado River near Kremmling and return around 4:00pm</p> <p>Dance Night:7:00pm</p> <p>8:30pm-Campfire and Vespers</p>	<p>9:30-11:30 Campers Choice/Optional Trail Ride</p> <p>2:00-4:00 CCO's talent skit event</p> <p>4:00-5:30 Check out</p> <p>7:00 S'mores for Stayover Campers</p>



LEAVING CAMP ON FRIDAY

CHECK-OUT (LAST DAY OF CAMP)



ALL sessions end on a FRIDAY

Check out will be located in our Dining Hall. Check out will begin at 4pm and lasts until 5:30pm. Light refreshments will be available. This is a great way to come see camp and learn all about your child's experiences while at CCO. You will have the chance to meet and get to know your child's counselor along with all their new friends.

*****CAMPERS MAY BE PICKED-UP BETWEEN 4 PM AND 5:30 PM.*****

YOU ARE REQUIRED TO SIGN OUT YOUR CAMPER(S). Check-out will be located in the Dining Hall. You will need your photo I.D. At Check-out, you will receive your camper's session picture CD and the camp evaluation form. If your camper went rafting, you will be able to purchase a photo of this activity from Mighty Upper Photos. **Please take a little extra time to make certain that you have collected ALL of your camper's items prior to your departure.** We do have "Lost and Found"; however, we cannot guarantee that any of your child's missing items will be turned into our camp office. **Remember to collect any camper medications brought to camp from the Nurse!**

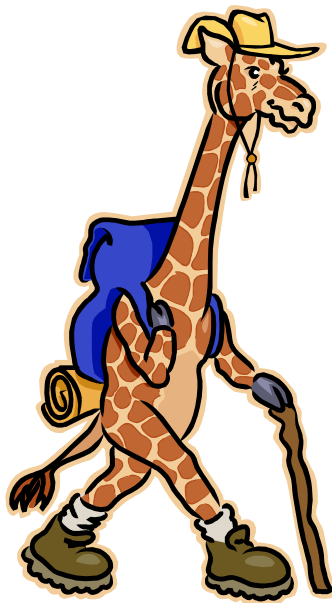
If your child is leaving camp by alternate transportation, please see the BUS and AIR TRANSPORTATION section on page 10 for that detailed information. Campers leaving by air will leave on Saturday

Those parents who might wish to stay at Snow Mountain Ranch after check-out for the evening or weekend please see flyer included in registration packet or call the camp office.

2012

Mini-Camp

Information



MINI-CAMP

July 1-3, 2012

Thanks for registering your child for Mini-Camp (for ages 7-10)! We are very excited to be a part of your child's first overnight camping experience!

We know you probably have a lot of questions and concerns, but we hope this section will give you additional Mini-Camp information you need. You can find more in-depth explanations of the camp experience in the other sections of this Parent Handbook. Instructions regarding cabin assignments, final payment and completion of the Health History/Exam form, the Parent Confidential form and the Transportation form found in the previous sections do apply to Mini-Camp.

Please be aware that certain details such as pick-up and departure times, the packing list, activities, etc. are different for Mini-Camp and are only listed in this section.

FIRST DAY OF MINI-CAMP.....

On Wednesday, July 1st, check-in for all MINI-CAMPERS is between 1:30 p.m. and 4:00 p.m. At this time you can visit your child's cabin, meet his/her counselors, and get a general feel for the camp environment. After you depart, your child will participate in games and introductory activities with his/her cabin group before heading off to dinner (first meal served). After dinner, the kids will participate in an opening campfire where they will sing songs, dance, and be entertained by our amazing and creative staff!

THE NEXT TWO DAYS.....

Campers will participate in various activities as a cabin group, including: swimming, hiking, archery, group games, arts & crafts, a horseback trail ride, orienteering, and other exciting outdoor adventures. On Monday evening, all of the cabins will get together to play an all-camp game before retiring to their cabins for lights out!

On Tuesday, July 3rd,

Special transportation offer: we realize that it may be difficult for parents to take time off from work on Tuesday for pick-up. So we are offering **FREE** bus transportation to the Jurassic park & ride at exit 259 off I-70 on **Tuesday only**. For bus transportation on Sunday, there is a \$30 fee. One of your child's counselors will be on the bus on Tuesday so you can meet them in person and ask any questions you may have.



MINI-CAMP PACKING LIST

Please refer to the traditional camp packing list for more information about some of the specific items starred (*) below. Do not hesitate to call us if you have any questions after reading through your parent information packet. You can reach us at 970-887-2648 or our Denver Direct line at 303-443-4743 ext. 4172.

- Sleeping Bag*
- 2 Short-sleeved t-shirts
- 2 Pairs of shorts
- 1 Pair Jeans or Long Pants
- 3 Pairs of Socks (2 cotton; 1 wool)
- 1 Set Long Underwear (polypropylene-not cotton)
- 3 Pairs Underwear
- 1 Pair Pajamas or Sweat shirt/pants
- Sturdy Tennis Shoes
- 1 Swimsuit
- 1 Towel

Toiletry Kit with Following Inside:

- Toothbrush/paste
- Hairbrush or Comb
- Soap/Shampoo/Conditioner

Optional:

- Pillow*/Extra Blanket*
- Camera-PLEASE label with campers' full name

Back Pack *(Book Pack Size)

With the following essentials inside:

- 2 Water Bottles*
- Sunscreen
- Insect Repellent (non-aerosol)
- Chap stick
- Baseball Cap or Sunhat
- Sunglasses
- Flashlight
- Raingear (Poncho or Coat/Pants)
- Jacket (Warm, long-sleeved)
- Winter Stocking Cap
- 1 Pair Sweatpants